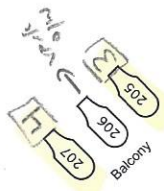
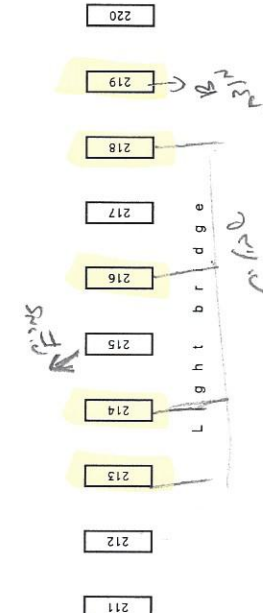
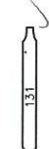
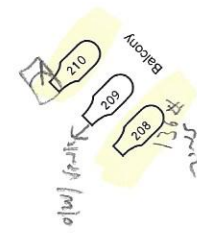
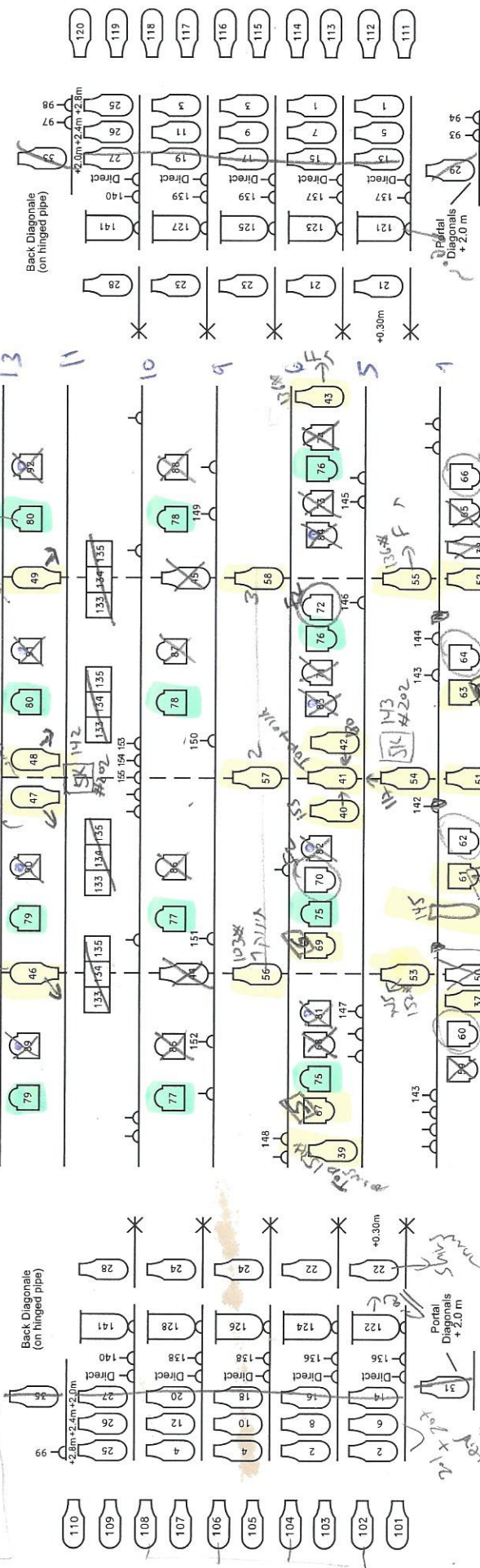


1510 12/18

15



10xN
1xN
2xS
4xPipes



ALL LANTERNS ARE ALTMAN LEKO 6 X 9 (WIDE ANGLE PROFILES)

- PAR 64 C.P. 60
- E.T.C. 26
- E.T.C. 36
- FRESNEL 1000 W

LOWEST LAMPS ON FLOOR STANDS

FREE CIRCUIT

HEIGHT OF STAGE BALCONIES + 6.50 M
NUMBERS REFER TO DIMMERS

Suzanne Dellal Hall
Lighting Plan (not to scale)
PIPES ABOVE STAGE

197 → 204
116
110
116
197 → 204